

# Product End-of-Life Disassembly Instructions

**Product Name / Model:** DT Research Rugged Convertible Laptop / LT350

**Purpose:** The document is intended for use by end-of-life recyclers or treatment facilities. It provides the basic instructions for the disassembly of DT Research products to remove components and materials requiring selective treatment, as defined by EU Directive 2012/19/EU of the European Parliament and of the Council of 4 July 2012 on waste electrical and electronic equipment (WEEE).

## 1.0 Items Requiring Selective Treatment

1.1 Items listed below are classified as requiring selective treatment.

1.2 Enter the quantity of items contained within the product which require selective treatment in the right column, as applicable.

Item Description	Notes	Quantity of items included in
Printed Circuit Boards Assemblies (PCBA)	With a surface greater than 10 sq cm	6
Mass storage device	Permanently soldered to PCBA	0
Batteries	All types including standard alkaline and lithium coin or button style	2
Mercury-containing components	For example, mercury in lamps, display backlights, scanner lamps,	0
LCD Display	a surface greater than 100 sq cm includes background illuminated displays with gas discharge lamps	1
Cathode Ray Tubes (CRT)		0
Capacitors / condensers (Containing		0
Electrolytic Capacitors / Condensers measuring greater than 2.5 cm in		0
External electrical cables and cords		1
Gas Discharge Lamps		0
Plastics containing Brominated Flame Retardants (not including PCBs or PCBAs already listed as a separate item above)		0
Components and parts containing toner and ink, including liquids, semi-liquids	Include the cartridges, print heads, tubes, vent chambers,	0
Components and waste containing asbestos		0
Components, parts and materials containing refractory ceramic fibers		0
Components, parts and materials containing radioactive substances		0

2.0 Tools Required

List the type and size of the tools that would typically be used to disassemble the product to a point where components and materials requiring selective treatment can be removed.

Tool Description	Tool Size (if applicable)
Description #1 Philips screwdriver	
Description #2 Slotted screwdriver	
Description #3 Hex screwdriver	

3.0 Product Disassembly Process

3.1 List the basic steps that should typically be followed to remove components and materials requiring selective treatment:

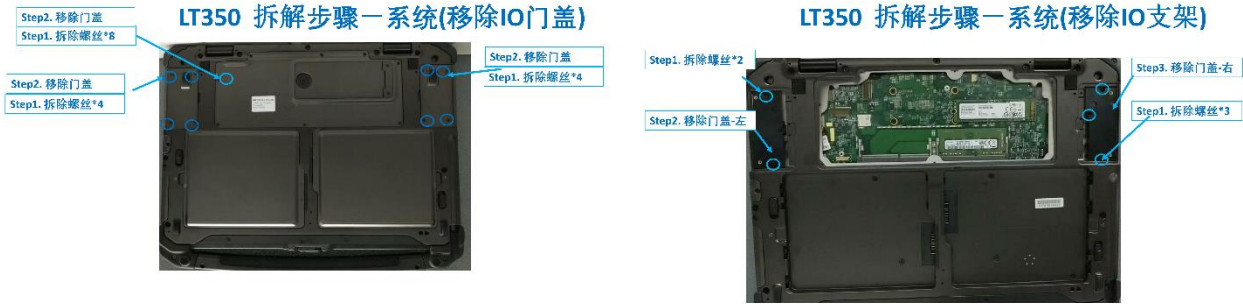
- (1) Dismantle system.
- (2) Dismantle enclosure D.
- (3) Dismantle enclosure C.
- (4) Dismantle enclosure A.
- (5) Dismantle enclosure B.
- (6) Dismantle PCBA.

3.2 Optional Graphic. If the disassembly process is complex, insert a graphic illustration below to identify the items contained in the product that require selective treatment (with descriptions and arrows identifying locations).

- (1) Dismantle system



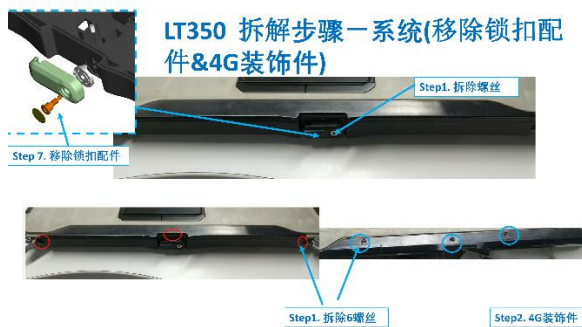
**Replacing the battery pack by hand:**  
1. Slide battery latch to the unlocked position  
2. Lift the battery pack off the comartment



## LT350 拆解步骤一系统(移除SSD)



## LT350 拆解步骤一系统(移除锁扣配件&4G装饰件)



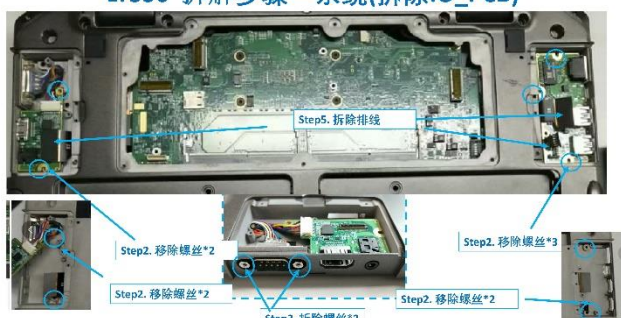
## LT350 拆解步骤一系统(移除螺丝盖&Mylar)



## LT350 拆解步骤一系统(移除D壳螺丝)

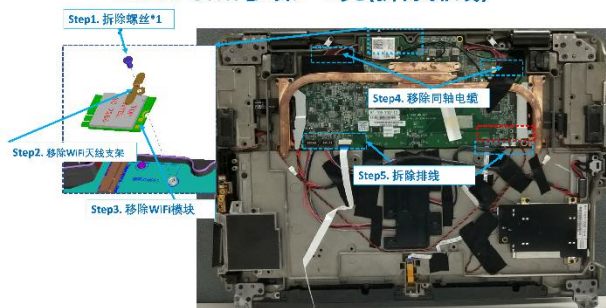


## LT350 拆解步骤一系统(拆除IO\_PCB)

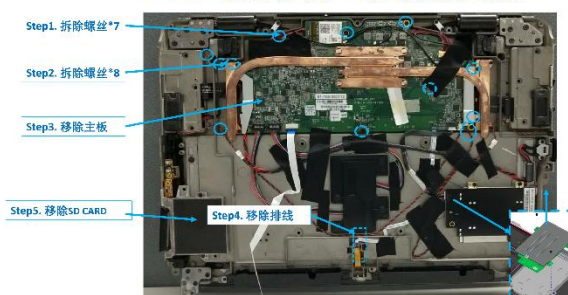


## (2) Dismantle enclosure D

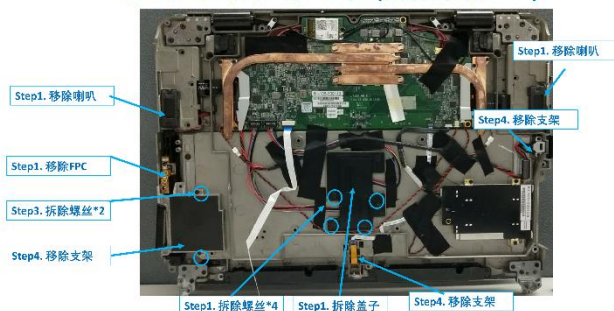
### LT350 拆解步骤一D壳(拆除排线)



### LT350 拆解步骤一D壳(移除主板)



### LT350 拆解步骤一D壳(拆除小板PCB)



### LT350 拆解步骤一D壳(拆HINGE)





(3) Dismantle enclosure C



(4) Dismantle enclosure A



LT350 拆解步骤一拆左端螺丝



LT350 拆解步骤一拆右端螺丝盖



LT350 拆解步骤一拆右端螺丝



LT350 拆解步骤一A壳底侧(8)



LT350 拆解步骤一拆除底侧5螺丝



LT350 拆解步骤一拆顶部装饰件&底部装饰件&conner

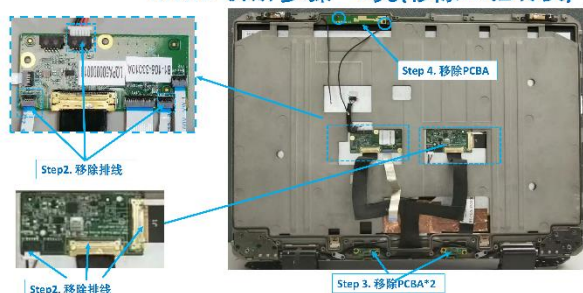


LT350 拆解步骤一A壳拆除9螺丝



## (5) Dismantle enclosure B

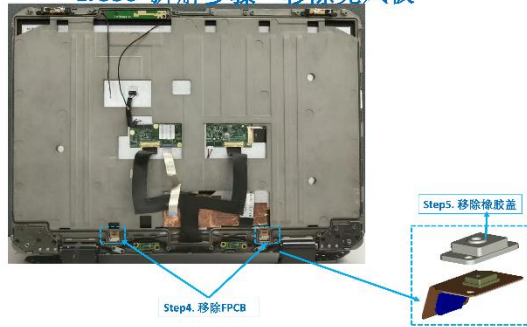
LT350 拆解步骤一B壳(移除IO驱动板)



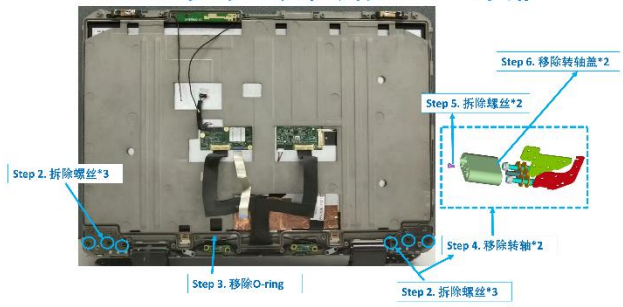
LT350 拆解步骤一B壳(移除HINGE&排线)



### LT350 拆解步骤一移除克风板



### LT350 拆解步骤一B壳(4移除HINGE&排线)



## (6) Dismantle PCBA

### LT330 拆解步骤一主板

